



# Product catalog

wolfseal | thepro | wolfconnect

Download brochure











# TABLE OF CONTENTS

---

wolfseal sealing products ..... 4 - 25

wolfseal fresh concrete bond-system ..... 26 - 30

wolfconnect micropile sealing ring ..... 31

thepro sealing products including insulation ..... 32 - 42

thepro DDS foundation sealing ..... 43 - 46

Services ..... 47 - 49





# PRODUCT OVERVIEW

## wolfseal KB 16

page 12

It is used for the pressure-waterproof sealing of all construction joints in concrete components.

### Package size

Box of 150 meters (including 75 x butt clips and 6 x cross clips)



## wolfseal KB 16 roll goods

page 13

It is used for the pressure-waterproof sealing of all construction joints in concrete components.

### Package size

Roll of 10 meters (including 3 x butt clips, 2 x cross clips and 10 x easyfix brackets)

Roll of 25 meters (including 6 x butt clips, 4 x cross clips and 25 x easyfix brackets)



## wolfseal KB 8

page 14

Suitable for use in floor plate offsets as well as for sealing construction joints in wall/ceiling connections.

### Package size

Box of 150 linear meters (including 75 x butt clips)



## wolfseal KB 8 roll goods

page 15

Suitable for use in floor slab level changes as well as for sealing expansion joints in wall/ceiling connections.

### Package size

Carton of 2 rolls, each 10 linear meters (including 6 x butt clips)



## wolfseal prefabricated break element (FTS) - straight

page 16

To seal vertical butt joints between the panel walls in combination with the **wolfseal** KB joint system. Length 2.50 meters.

### Package size

Pallet of 62.5 linear meters (including 50 x cross clips and 75 x dowels)

**WT 24/28 | WT 29/34 | WT 35/40**



*other dimensions available upon request*

## wolfseal prefabricated break element (FTS) - corner

page 16

For sealing vertical corner joints between the unit walls in combination with the **wolfseal** KB joint system. Length 2.50 m.

### Package size

Pallet of 62.5 linear meters (including 50 x cross clips and 75 x dowels)

**WT 24/28 | WT 29/34 | WT 35/40**



*other dimensions available upon request*



## wolfseal KB 45° corner

page 17

For connecting the **wolfseal** FTS corner profiles with the **wolfseal** KB joint system.

Package size
Box of 4 pieces (including 8 x butt clips)



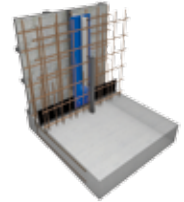
## wolfseal in-situ concrete break element (OBS)

page 18

By deliberately specifying cracks, **wolfseal** OBS enables the pouring of long concrete sections in white tank construction.

Package size
Pallet of 62.5 linear meters (including 50 x cross clips)
<b>WT 24/25   WT 30</b>

*other dimensions available upon request*



## wolfseal sound insulation joint tape

page 20

Sound separation joint tape for sealing sound or building separation joints from the upper edge of the base plate in semi-detached and terraced houses.

Package size
1 piece of 3 linear meters



## wolfseal sound insulation basket

page 20

Joint sealing made of soft fiber mat with integrated retaining brackets. For use with unit walls.

Package size
1 Set (4 pieces of 1.50 m each; Height: 3.0 m)
<b>WT 24/25   WT 30</b>

*other dimensions available upon request*



## wolfseal wall thickness WU

page 21

Waterproof formwork tie points for use in white tanks made of in-situ concrete with centrally applied **wolfseal** special bonding coating.

Package size
Box of 50 pieces (including 2 x plugs and 2 x closure caps)
<b>WT 24   WT 25   WT 30   WT 36,5   WT 40</b>

*other dimensions available upon request*



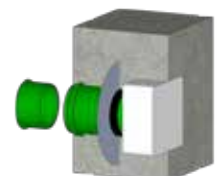
## wolfseal wall penetration KG 2000

page 22

Pipe section with socket and **wolfseal** flange for creating waterproof pipe penetrations in white tanks.

Package size
Box of 1 piece
<b>DN 100   DN 125   DN 150   DN 200</b>
<b>WT 24 - 50</b>

*other dimensions available upon request*





# PRODUCT OVERVIEW

## wolfseal lining pipe KG

page 22

The **wolfseal** lining pipe serves as a conduit for accommodating media pipes.

### Package size

Box of 1 piece

Inner Diameter: **103 mm | 118 mm | 153 mm | 190 mm**

**WT 24 - 50**

*other dimensions available upon request*



## wolfseal lining pipe ZVR

page 22

The **wolfseal** lining pipe ZVR serves as a conduit for accommodating media pipes.

### Package size

Box of 1 piece

Inner Diameter: **100 mm | 125 mm | 150 mm | 200 mm**

**WT 24 - 50**

*other dimensions available upon request*



## wolfseal floor penetration KG 2000

page 23

Pipe section with socket and **wolfseal** flange for creating a waterproof floor penetration in white tanks. Length 50 cm.

### Package size

Box of 1 piece

**DN 100 | DN 125 | DN 150 | DN 200**

*other dimensions available upon request*



## wolfseal floor drain ABS

page 23

Self-sealing floor drain with **wolfseal** special composite coating and sealing ring for connection to the base plate. Drainage vertical, with odor trap or silt bucket, **ABS slotted grate**, lip seal, and construction time protection cover.

### Package size

Box of 1 piece DN 100

**Load class: K3 / 300 kg | L15 / 1,5 t**



## wolfseal floor drain stainless steel

page 23

Self-sealing floor drain with **wolfseal** special composite coating and sealing ring for connection to the base plate. Vertical drainage, with odor trap or silt bucket, **slotted grate made of stainless steel**, lip seal, and construction time protection cover.

### Package size

Box of 1 piece DN 100

**Load class: K3 / 300 kg | L15 / 1,5 t**





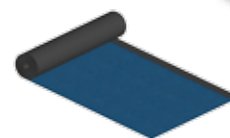
## wolfseal fresh concrete bond (FBV) sealing membrane 3,5 mm

page 27

Waterproof, backflow-safe, and radon-reducing sealing membrane with fresh concrete bond against both pressurized and non-pressurized water.

### Package size

24 rolls of 7,5 linear meters x 1 meter (Palette of 180 square meters)



## wolfseal fresh concrete bond (FBV) sealing membrane 4,5 mm radon-resistant

page 28

Waterproof, backflow-safe, and radon-tight sealing membrane with fresh concrete bond against both pressurized and non-pressurized water.

### Package size

20 rolls of 7,5 linear meters x 1 meter (Palette of 150 square meters)



## wolfseal FBV wall thickness

page 29

Waterproof wall thickness with external **wolfseal** special composite coating.

### Package size

Box of 50 pieces (including 2 x plugs and 1 x closure cap)

**WT 24 | WT 25 | WT 30 | WT 36,5 | WT 40**



*other dimensions available upon request*

## wolfseal FBV sealing package

page 30

For sealing all penetrations to the **wolfseal** FBV sealing membrane.  
The set includes: The multifunctional building waterproofing **wolfseal** 1K rapid, the **wolfseal** sealing tape standard, the cut-in **wolfseal** sealing tape and the accessories required for application, consisting of flat brushes and alcohol-based cleaning cloths.

### Package size

1 set (**wolfseal** 1K rapid, sealing tape standard/cut incl. accessories)

**Sealing package (S) | Sealing package (M) | Sealing package (L)**

(Set size depending on the number and size of penetration)



**NEW!**

## wolfconnect micropile sealing ring

page 31

Tight connection of the **wolfseal** FBV sealing membrane to micropiles.

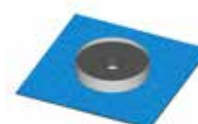
### Package size

Box of 10 pieces

**Sealing ring (S)** - Diameter of micropile: 2 to 8.5 cm

**Sealing ring (M)** - Diameter of micropile: 9 to 14 cm

**Sealing ring (L)** - Diameter of micropile: 15 to 20 cm



**NEW!**



# PRODUCT OVERVIEW WOLFSEAL | ACCESSORIES

## wolfseal retaining brackets

For fixing the **wolfseal** KB 16 joint system on the upper reinforcement layer. When using the retaining bracket, tying to the reinforcement is necessary.

Package size

Box of 50 pieces



## wolfseal easyfix

For fixing the **wolfseal** KB 16 joint system on the upper reinforcement layer. When using the **wolfseal** easyfix retaining bracket, tying to the reinforcement is no longer necessary.

Package size

Bag of 25 pieces



## wolfseal butt clip KB 16

This clip is used to secure the overlaps in the joint area of the **wolfseal** joint system.

Package size

Bag of 25 pieces



## wolfseal butt clip KB 8

This clip is used to secure the overlaps in the joint area of the **wolfseal** joint system.

Package size

Bag of 25 pieces



## wolfseal cross clip

This clip is used to secure all T-joints and intersection points in the **wolfseal** joint system.

Package size

Bag of 25 pieces



## wolfseal expansion joint connection

page 19

Waterproof connection of the **wolfseal** joint system to all common expansion joint systems.

Package size

Box of 2 pieces (including 4 x butt clips)

**DFA KB 16 | DFA KB 8**





## wolfseal connection tape

page 24

For properly sealing a potential equalization, a pipe penetration, or for repairing damaged coatings of joint systems.

### Package size

1 roll of 15 linear meters - **width 40 mm | width 75 mm**  
1 linear meter - **width 40 mm**



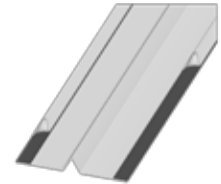
## wolfseal closure profile - straight

page 25

Closure profile for sealing the wall panel joints in unit walls. For use in straight joints and external corners.

### Package size

1 piece of 2.0 linear meters - width 12 cm - joint width 1 - 3 cm (including 8 x impact anchors)



## wolfseal closure profile - corner

page 25

Closure profile for sealing the wall panel joints in unit walls. For use in re-entrant corners (inside corners).

### Package size

1 piece of 2.0 linear meters - width 12 cm - joint width 1 - 3 cm (including 8 x impact anchors)







THE PLUS  
IN SECURITY

# PROTECTION LETTER

The Roland Wolf GmbH, manufacturer of **wolfseal** waterproofing products, offers a free damage analysis with the protection letter.

In the event of water damage occurring in a building sealed with **wolfseal** products, Roland Wolf GmbH determines the cause of the damage.

During the object-related warranty period, the damage analysis is carried out free of charge up to a maximum cost of €5,000. If Roland Wolf GmbH is able to conclusively prove the cause, the party responsible for the damage bears the cost of the damage analysis.

If water damage occurs in your building later, you are registered with us and only need to request the damage analysis from Roland Wolf GmbH.

## WOLFSEAL WATERPROOFING PRODUCTS



**The Wolf-  
Protection Letter**

**Unique in the  
industry**

In the field of building sealing, we have been providing outstanding work for over 40 years, earning a good reputation through competence and reliability.

The **wolfseal** joint system has been a proven product for waterproofing white tanks for years and is constantly being improved in detail.



**Highest security for highest standards.**



# WOLFSEAL KB 16

## THE PRODUCT

The **wolfseal** KB 16 consists of hot-dip galvanized steel sheet elements, fully coated on both sides. The top of the **wolfseal** KB 16 element is equipped with a double-sided protective film, which is provided with a tear-off edge in the overlap area - the bottom with white protective paper. The **wolfseal** special composite coating ensures water-proofing of construction joints through bonding to fresh concrete with an embedding depth of only 3 cm.

The elements are 2 m long, 16.7 cm high, and approximately 1.2 mm thick. The packaging unit contains 150 linear meters of **wolfseal** KB 16 including butt clips.

The **wolfseal** KB 16 is tested up to 5.0 bar with an embedding depth of 3 cm.

## THE APPLICATION AREA

**wolfseal** KB 16 is used in all construction joints of waterproof structures, horizontally or vertically, for both pressurized and non-pressurized water. **wolfseal** KB 16 is resistant to all organic wastewater (according to the chemicals inventory list). The groundwater compatibility of **wolfseal** KB 16 has been tested and confirmed.

## THE PROCESSING

**wolfseal** KB 16 is installed on the upper reinforcement layer, centrally on the wall, before concreting, after removing the lower protective paper. The individual elements are overlapped by 8 cm, firmly pressed together, and secured with the supplied butt protection. For water columns of more than 8 m, the joint must be additionally secured with jointing mortar.

For fastening, the **wolfseal** easyfix retaining brackets available in the accessories are used. When installing in wall/wall and floor/floor joints, the elements are fixed centrally between the joints. Intersection points are secured with the supplied **wolfseal** cross clip. The processing guidelines must be followed.



## COMPELLING ADVANTAGES

- Tested water pressure of 5.0 bar
- Quick and secure sealing of all construction joints without the need for complex concrete kerbs and reinforcement recesses
- Easy and fast installation of the 2 m long elements before concreting
- The protective film in the overlap area is equipped with a tear-off edge
- **wolfseal** special composite coating bonded to concrete
- Can be used in combination with other **wolfseal** products

## APPROVALS

### European Technical Assessment:

ETA - 15/0348 - Stand: 2016

### Test report on groundwater compatibility:

K-271038-16-WR Hygiene Institut Ruhrgebiet

### CE marking



Further information on the test certificates and reports can be found on our website [www.wolfseal.de](http://www.wolfseal.de) under downloads.

# WOLFSEAL KB 16 ROLL GOODS

## THE PRODUCT

The **wolfseal** KB 16 roll consists of double-sided fully coated, hot-dip galvanized steel sheet. The top of the **wolfseal** roll is equipped with a double-sided protective film, while the bottom has white protective paper. The **wolfseal** special composite coating ensures water impermeability of construction joints through bonding to fresh concrete at an embedding depth of only 3 cm.

The rolls are available in lengths of 10 m or 25 m. The height of the joint system is 16.7 cm with a thickness of approximately 1.2 mm.

At an embedding depth of 3 cm, **wolfseal** KB 16 is tested up to 5.0 bar.

## THE APPLICATION AREA

The **wolfseal** KB 16 roll is used in all construction joints of waterproof structures, whether horizontal or vertical, in situations with both pressurized and non-pressurized water. The **wolfseal** KB 16 roll is resistant to all organic waste (according to the chemical inventory list). The groundwater compatibility of the **wolfseal** KB 16 roll has been tested and confirmed.

## THE PROCESSING

**wolfseal** KB 16 is installed on the upper reinforcement layer, centrally on the wall, before concreting, after removing the lower protective paper. The rolls are cut to size using a standard sheet metal shear. The **wolfseal** KB 16 roll is overlapped by 8 cm, firmly pressed together, and secured with the supplied butt protection.

For water columns of more than 8 m, the joint must be additionally secured with jointing mortar. For fastening, the **wolfseal** easyfix retaining brackets available in the accessories are used. When installing in wall/wall and floor/floor joints, the elements are fixed centrally between the joints. Intersection points are secured with the supplied **wolfseal** cross clip. The processing guidelines must be followed.



## COMPELLING ADVANTAGES

- Tested water pressure of 5.0 bar
- Quick and secure sealing of all construction joints without the need for complex concrete kerbs and reinforcement recesses
- Easy and fast installation even before concreting
- **wolfseal** special composite coating bonded to concrete
- Can be used in combination with other **wolfseal** products for processing

## APPROVALS

### European Technical Assessment:

ETA - 15/0348 - Stand: 2016

### Test report on groundwater compatibility:

K-271038-16-WR Hygiene Institut Ruhrgebiet

### CE marking



Further information on the test certificates and reports can be found on our website [www.wolfseal.de](http://www.wolfseal.de) under downloads.



# WOLFSEAL KB 8

## THE PRODUCT

The **wolfseal** KB 8 element consists of double-sided completely coated, hot-dip galvanized steel sheet with protective film on both sides. The **wolfseal** special bonding coating ensures water impermeability at construction joints through bonding to fresh concrete with a minimum embedment depth of 3 cm.

The elements are 2 meters long, 8 cm high, and approximately 1.2 mm thick, packaged in units of 150 linear meters including joint clips.

Tested water pressure of 2.5 bar (permissible according to abP 1.0 bar, equivalent to 2.5 times safety on the test pressure).

## THE APPLICATION AREA

**wolfseal** KB 8 is suitable for use in floor slab level changes as well as for sealing expansion joints in wall/ceiling connections. Due to its low embedment depth in both concrete components, special and elaborate reinforcement guidance is not necessary. **wolfseal** KB 8 is integrated into the components in halves, providing a higher contact with fresh concrete per component with a depth of 4 cm, compared to KB 16.

**wolfseal** KB 8 is resistant to all organic wastewater (according to chemical inventory list).



## Compelling advantages

- Tested water pressure of 2.5 bar
- Quick and secure sealing of wall/ceiling joints or height transitions in floor plates without the need for complex concrete kerbs or reinforcement guidance
- **wolfseal** special composite coating bonded to concrete
- Compatible with many other **wolfseal** waterproofing products

## APPROVALS

### Test report on groundwater compatibility:

K-271038-16-WR Hygiene Institut Ruhrgebiet

### General building authority test certificate:

MFPA Leipzig P-SAC 02/5.1/21-273



## THE PROCESSING

After removing the protective film, installation is done by inserting into fresh concrete or fixing to the top of the wall using **wolfseal** retaining brackets before wall concreting. The elements are overlapped by 8 cm, firmly pressed together, and secured with the supplied butt protection. The processing guidelines must be followed.

# WOLFSEAL KB 8 ROLL GOODS

## THE PRODUCT

The **wolfseal** KB 8 roll consists of fully coated, hot-dip galvanized steel sheet with protective film on both sides. The **wolfseal** special composite coating ensures waterproofing of construction joints with a minimum embedding depth of 3 cm due to its bond to fresh concrete.

The roll is available in a length of 10 meters. The height of the joint system is 8 cm with a thickness of approximately 1.2 mm.

It has been tested for waterpressure up to 2.5 bar (permissible according to abP 1.0 bar, which corresponds to a safety factor of 2.5 times the test pressure).

## THE APPLICATION AREA

The **wolfseal** KB 8 roll is suitable for use in floor plate transitions and for sealing construction joints in wall/ceiling connections. Due to its shallow embedding depth in both concrete elements, there is no need for special and elaborate reinforcement guidance.

The **wolfseal** KB 8 roll is embedded halfway into the components, providing a higher contact area with fresh concrete per component, with a 4 cm embedding depth. It is resistant to all organic wastewater (according to the chemical inventory list).

## THE PROCESSING

After removing the protective film, installation is done by inserting it into the fresh concrete or fixing it in the wall crown with the help of the **wolfseal** retaining brackets before wall concreting.

The ends of the KB 8 roll are overlapped by 8 cm each, pressed firmly together, and secured by the supplied impact protection. The processing guidelines must be followed.



## Compelling advantages

- Tested water pressure of 2.5 bar
- Quick and secure sealing of wall/ceiling joints or height transitions in floor plates without the need for complex concrete kerbs or reinforcement guidance
- **wolfseal** special composite coating bonded to concrete
- Compatible with many other **wolfseal** waterproofing products

## APPROVALS

### Test report on groundwater compatibility:

K-271038-16-WR Hygiene Institut Ruhrgebiet

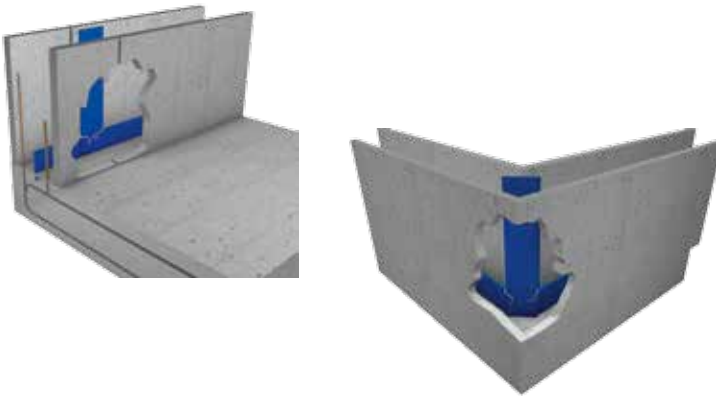
### General building inspection certificate:

MFPA Leipzig P-SAC 02/5.1/21-273





# WOLFSEAL PREFABRICATED BREAK ELEMENT (FTS) STRAIGHT AND CORNER PROFILE



## THE PRODUCT

The **wolfseal** prefabricated break elements (FTS) consist of double-sided fully coated hot-dip galvanized steel sheet elements with fastening wings. The **wolfseal** special composite coating ensures water impermeability of predetermined crack joints through bonding to fresh concrete.

The elements are 2.50 meters long, with the width of the joint system being 16.7 cm and a thickness of approximately 2.5 mm. When embedded to a depth of 8 cm the **wolfseal** FTS is tested up to 5 bar.

## THE APPLICATION AREA

The **wolfseal** prefabricated break element is used to secure joint seams against both pressurized and non-pressurized water in element walls.

The **wolfseal** FTS is resistant to all organic wastewater (according to the chemical inventory list). The groundwater compatibility of the **wolfseal** prefabricated break element has been tested and confirmed.

## THE PROCESSING

The **wolfseal** prefabricated break element is bolted to the end faces of the element walls after removing the protective film. The connection to seal the joint at the wall-floor joint is made using the supplied cross clips.

Please follow the processing guidelines carefully.

## COMPELLING ADVANTAGES

- Tested water pressure resistance of 5.0 bar
- Quick and secure sealing of all prefabricated joint seams without reinforcement in the wall core
- Completion of waterproofing work coincides with the completion of concrete work. No additional time, costs, or weather conditions need to be considered for additional measures
- Easy and secure connection of the element walls to the existing, proven **wolfseal** joint security system in the sole/wall area
- No additional crane waiting times during the placement of the element walls. Joint security is ensured by anchoring the FTS elements to the end faces of the element walls
- The **wolfseal** special bonding coating is resistant to all organic wastewater
- The FTS wing weakens the wall precisely in the area of the joint plate. This creates a targeted crack guidance towards the **wolfseal** FTS.

## APPROVALS

### European Technical Assessment:

ETA - 15/0348 - Stand: 2016

### Test report on groundwater compatibility:

K-271038-16-WR Hygiene Institut Ruhrgebiet

CE marking



Further information on the test certificates and reports can be found on our website [www.wolfseal.de](http://www.wolfseal.de) under downloads.

# WOLFSEAL KB 45° CORNER

---

## THE PRODUCT

The **wolfseal** KB corner consists of fully coated, hot-dip galvanized steel sheets.

The KB corner is equipped with a protective film on both sides at the top and with white protective paper at the bottom.

The **wolfseal** KB corner is required to connect the FTS corner profiles with the **wolfseal** joint system.

## THE APPLICATION AREA

To create a tight connection between **wolfseal** FTS corner elements and the **wolfseal** KB 16 joint system, installed horizontally in the wall/base joint of element walls.

## THE PROCESSING

The **wolfseal** KB 45-degree corner is placed on the reinforcement in the corners and attached to the KB 16 elements on the left and right with cross clips. Then the joints are pressed firmly together and secured with the supplied impact protection.

Please observe the processing guidelines.



## COMPELLING ADVANTAGES

- No complex bending work on the construction site
- Precise 45-degree angle



# WOLFSEAL IN-SITU CONCRETE BREAK ELEMENT (OBS)

## THE PRODUCT

The **wolfseal** OBS consists of a joint element with the proven **wolfseal** special bonding coating, as well as wings made of galvanized steel sheet, which separate the concrete cross-section. The elements are manufactured in a standard length of 2.50 meters. The **wolfseal** in-situ concrete break element is 16.7 cm wide, 2.5 m long and approximately 1.8 - 2.1 mm thick. The crack wings are available for each wall thickness with standard elements available for 24 cm, 25 cm or 30 cm thick walls. The elements come ready for installation to the construction site.

Tested water pressure of 5.0 bar.

## THE APPLICATION AREA

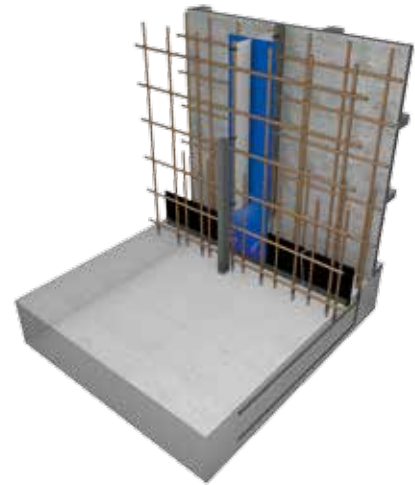
The **wolfseal** OBS is used to create a predetermined crack in reinforced concrete walls. At the same time the resulting crack is secured against both pressurized and non-pressurized water by the sealing element.

With white tank constructions, this allows for longer work cycles to be poured without issues, preventing shrinkage cracks from occurring uncontrollably, instead forming at the required locations, which are systematically sealed. The groundwater compatibility of the **wolfseal** OBS has been tested and confirmed.

## THE PROCESSING

The installation of the elements is carried out by placing them between the outer and inner wall reinforcement. The elements are securely fixed to the reinforcement by tight clamping.

The connection to the wall/sole joint is made in the usual manner by overlapping and fixing with **wolfseal** cross clamps to the **wolfseal** KB 16 element. Please follow the processing guidelines carefully.



## COMPELLING ADVANTAGES

- Tested water pressure of 5.0 bar
- Quick and easy installation of the **wolfseal** elements by tying them to the reinforcement
- The OBS wings weaken the wall precisely in the area of the joint plate, resulting in a targeted crack formation on the OBS
- The **wolfseal** special bonding coating is resistant to all organic wastewater

## APPROVALS

### European Technical Assessment:

ETA - 15/0348 - Stand: 2016

### Test report on groundwater compatibility:

K-271038-16-WR Hygiene Institut Ruhrgebiet

### CE marking



Further information on the test certificates and reports can be found on our website [www.wolfseal.de](http://www.wolfseal.de) under downloads.

# WOLFSEAL EXPANSION JOINT CONNECTION

## THE PRODUCT

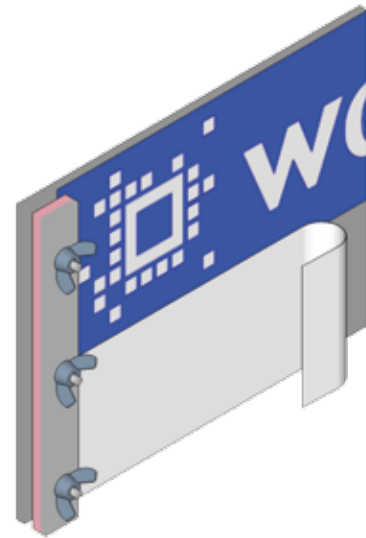
The **wolfseal** expansion joint connector consists of a clamping device used to connect **wolfseal** elements with working/expansion joint tapes of all kinds. At the end of the **wolfseal** element, the expansion joint connector is attached to the expansion joint tape with a screwable clamping device.

## THE APPLICATION AREA

Safe and fast sealing of the intersection between working and expansion joints in concrete structures. The **wolfseal** expansion joint connector KB 16 is to be installed in wall/floor joints, while the **wolfseal** expansion joint connector KB 8 is used in wall/ceiling joints.

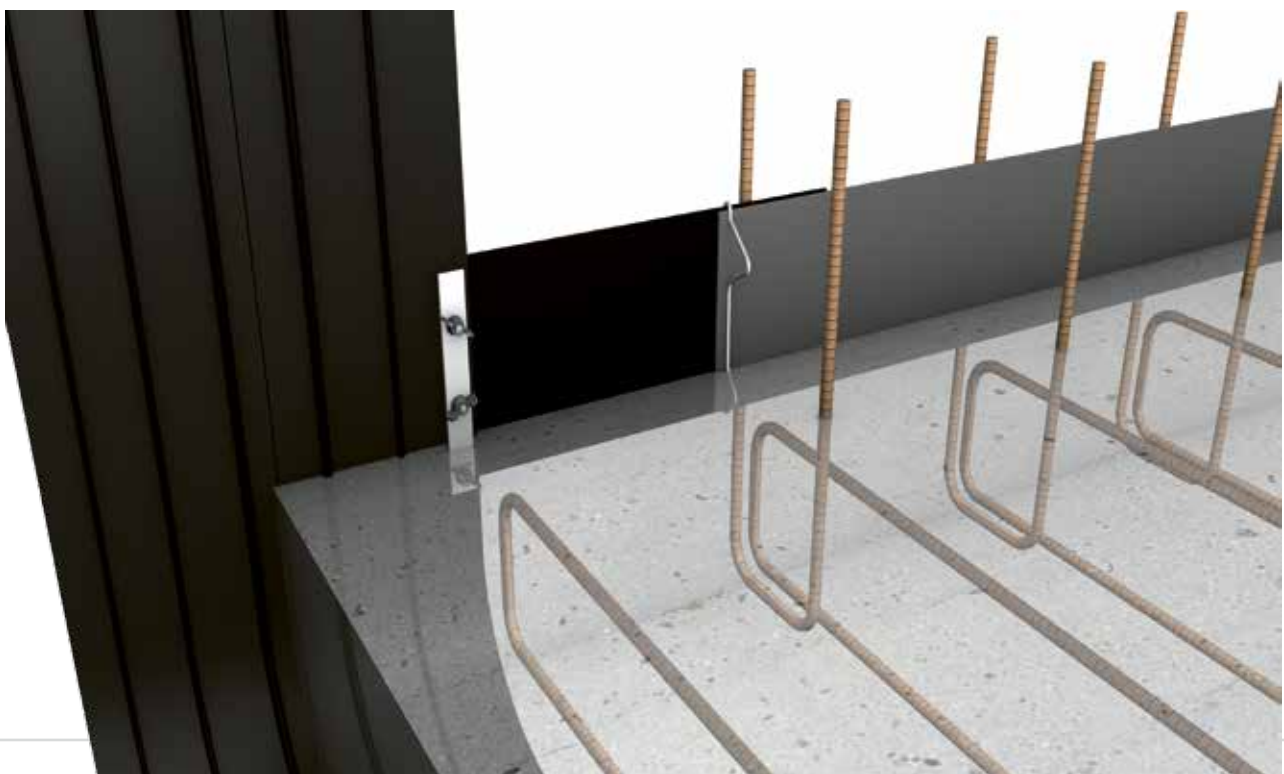
## THE PROCESSING

The **wolfseal** expansion joint connector is held in place at the desired location on the expansion joint band and the holes are transferred using a hole punch. Then it is screwed onto the expansion joint band from the side facing the water. The elements can be connected to the expansion joint connector by simply pressing them against each other. Please adhere to the processing guidelines.



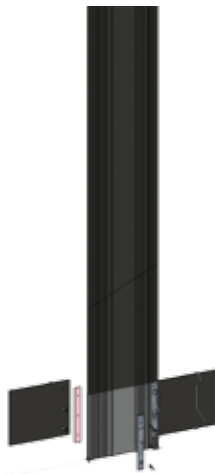
## COMPELLING ADVANTAGES

- Quick, easy and secure connection of **wolfseal** elements to expansion joints of all kinds
- No welding or vulcanization work required on the expansion joint band
- Installation height can be flexibly determined on site





# WOLFSEAL SOUND INSULATION JOINT SYSTEM



## THE PRODUCT wolfseal sound insulation joint tape

The **wolfseal** sound insulation joint tape is an expansion joint tape with the ability to connect on both sides to the **wolfseal** KB 16 joint system.

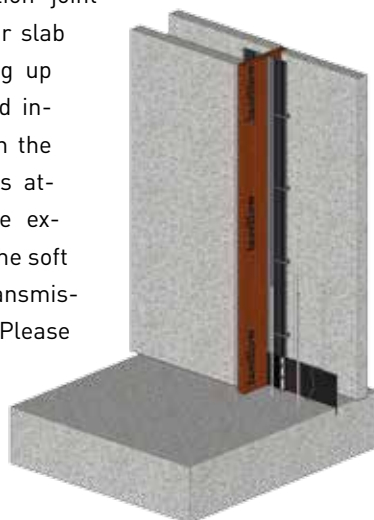
The lower edge is equipped with **wolfseal**'s special bonding coating to ensure a watertight connection to the floor slab. The associated expansion joint connectors are pre-installed at the factory. Not separately tested for building code compliance.

## THE APPLICATION AREA

The **wolfseal** sound insulation joint tape is used for sealing and sound isolation of building expansion joints from the top of the floor slab in duplexes and row houses.

## THE PROCESSING

The **wolfseal** sound insulation joint tape is embedded in the floor slab during pouring. When setting up the wall elements, the sound insulation basket is installed in the building expansion joint. This attachment securely holds the expansion joint in position and the soft fiber mat prevents sound transmission between the buildings. Please follow the installation guidelines.



## THE PRODUCT wolfseal sound insulation basket

The **wolfseal** sound insulation basket is a joint restraint made of soft fiber mats with integrated brackets for stabilizing the joint tape during wall installation and concreting. Not separately tested for building code compliance.

## COMPELLING ADVANTAGES

- Easy and reliable connection to the **wolfseal** joint system
- No need for seam welding of the sound separation joint bands
- Stable anchoring of the joint band ensured by the **wolfseal** sound insulation basket during wall concreting
- Waterproof against both non-pressurized and pressurized water
- Effective interruption of sound waves between the buildings
- Suitable for both cast-in-place and recast construction methods

# WOLFSEAL WALL THICKNESS

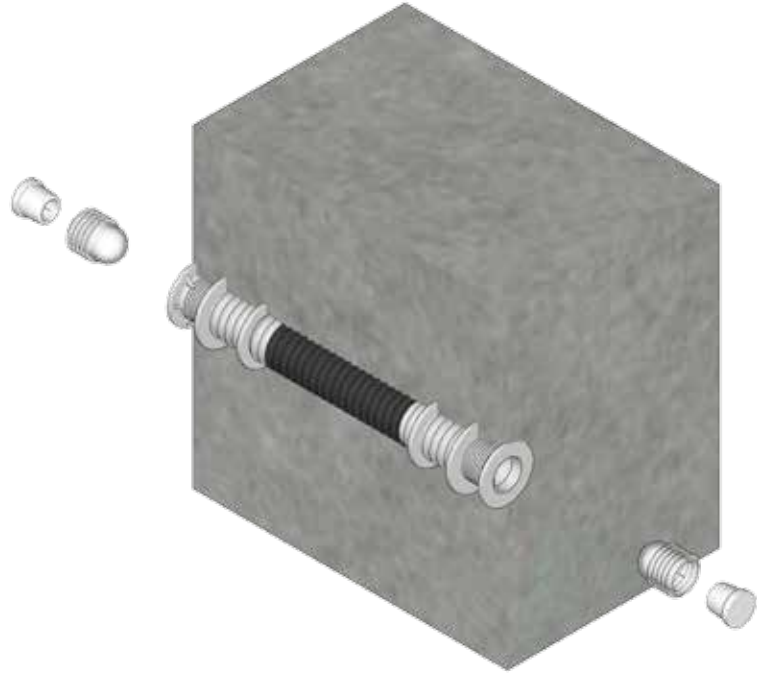
## THE PRODUCT

The **wolfseal** wall thickness WU consists of a plastic tube with an inner diameter of approximately 22 mm along with integrated anchors and water barriers.

Additionally the **wolfseal** wall thickness WU is equipped with the proven **wolfseal** special composite coating for a watertight bond between the wall thickness and concrete.

The following wall thicknesses are available as standard: WT 24, 25, 30, 36.5, 40.

Tested by the Construction Materials Testing Facility Bodensee.



## THE APPLICATION AREA

The **wolfseal** wall thickness WU is designed for the secure and fast sealing of tensioning points for all common formwork systems in cast-in-place concrete construction.

## THE PROCESSING

The **wolfseal** wall thickness WU is installed by sliding it onto the tensioning rod between the inner and outer formwork, ensuring precise formwork spacing during tensioning.

After demolding, the supplied sealing plugs are inserted on both sides, 3-4 cm deep, and sealed with the supplied covers on both sides.

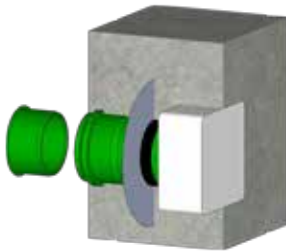
Please follow the installation guidelines carefully.

## COMPELLING ADVANTAGES

- Additional security provided by the **wolfseal** special composite coating
- Can be sealed immediately after demolding
- Weather-independent installation and sealing
- Stable spacer for precise wall thicknesses



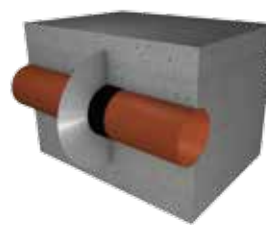
# WOLFSEAL WALL PENETRATIONS



## THE PRODUCT

### wolfseal wall penetration KG 2000

The product wall penetrations consists of KG 2000 pipes with a centrally positioned water barrier and is additionally equipped with a **wolfseal** connection tape. This ensures double security against water permeability. It has been tested by the MFPA Leipzig up to 50 meters water column. Further information on test certificates and reports can be found on our website [www.wolfseal.de](http://www.wolfseal.de) under downloads.



## THE PRODUCT

### wolfseal lining pipe

The **wolfseal** lining pipe serves as a conduit pipe for accommodating media pipes.

## THE APPLICATION AREA

The **wolfseal** pipe penetrations are used wherever watertight penetrations of media and wastewater pipes are required. The **wolfseal** pipe penetrations can be used in cast-in-place concrete, precast concrete walls, and solid concrete walls.

## THE PROCESSING

The process involves removing the Styrofoam ring from the pipe penetration and securing it to the designated location on the outer formwork with nails. Next, the outer reinforcement is installed. The pipe penetration is then inserted into the Styrofoam ring, and the protective film is removed. Subsequently, the inner reinforcement is installed and the setup is prepared for concreting. It is important to ensure that the end cap is attached to the pipe. Please adhere to the processing guidelines provided.

## COMPELLING ADVANTAGES

- Tested up to 5 bar water pressure by MFPA Leipzig, Test Report No. UB 5.1/11-453, PB 5.1/15-471-1
- Trouble-free installation
- Covering to prevent dirt from entering the pipe passage
- Double security against water permeability through centrally positioned water barrier and **wolfseal** connection tape
- Suitable for any wall thickness and available for all conventional nominal sizes
- Standard pipe systems can be easily connected

# WOLFSEAL FLOOR PENETRATION

## THE PRODUCT wolfseal floor drain

The watertight **wolfseal** floor drain with odor trap or sump bucket is used for draining surfaces through water-permeable components.



## THE APPLICATION AREA

The **wolfseal** floor drain can be used to drain areas formed by water-impermeable reinforced concrete components. Penetrating the slabs is now possible without risk using the **wolfseal** floor drain. Basement floors can therefore be safely drained via main pipes in the subsoil area. The requirement for „water impermeability“ of the white tank is completely fulfilled by the proven **wolfseal** connection tape as well as an additional water barrier. The double security against water permeability is thus.

## THE PROCESSING

The following steps must be carried out before installing the **wolfseal** floor drain:

1. Lay drainage under the clean layer.
2. Lay out PE film.
3. Lay lower reinforcement and cut out drainage.

Install the floor drain up to the temporary protective cover, which serves to protect against contamination during construction.

Subsequently remove the protective film of the floor drain and pour the concrete floor slab. Once the floor structure including the floor covering has been laid the top piece with the grate can be installed. It is important to follow the installation guidelines.

## COMPELLING ADVANTAGES

- Tested up to 5 bar water pressure by MFPA Leipzig, Test Report No. UB 5.1/11-453, PB 5.1/15-471-1
- Cover to prevent dirt from entering the drain
- Double security against water permeability provided by water barrier and **wolfseal** connection tape
- All building technology requirements are fulfilled

## THE PRODUCT wolfseal floor penetration KG 2000

The **wolfseal** floor penetration consist of KG 2000 pipes with an integrated water barrier and are additionally equipped with a **wolfseal** connection tape. This provides double security against water permeability.



## THE APPLICATION AREA

**wolfseal** floor penetrations are used wherever watertight floor penetrations are required. The floor penetrations are adjusted to the respective floor slab thickness on the construction site.

## THE PROCESSING

The following steps must be carried out before installing the **wolfseal** floor drain:

1. Lay drainage under the clean layer.
2. Lay out PE film.
3. Lay lower reinforcement and cut out drainage.

The **wolfseal** floor penetration is cut to the required length. The top edge of the floor penetration equals the top edge of the floor slab.

Then, the floor penetration is installed and the sealing ring is inserted into the socket. After laying the upper reinforcement and cutting out the drainage, the protective film of the floor penetration is removed and the floor slab is concreted. The processing guidelines must be observed.

## COMPELLING ADVANTAGES

- Tested up to 5 bar water pressure by MFPA Leipzig, Test Report No. UB 5.1/11-453, PB 5.1/15-471-1
- Cover to prevent contamination of the floor passage
- Double security against water permeability with centrally placed water barrier and **wolfseal** connection tape
- Available for all conventional nominal sizes
- Common pipe systems can be easily connected



# WOLFSEAL CONNECTION TAPE

## THE PRODUCT

The **wolfseal** connection tape is a double-sided sealing tape made of a composite coating and fabric insert. It bonds homogeneously with fresh concrete and adheres to all dry, grease-free and dust-free substrates. The **wolfseal** connection tape is available in 40 mm or 75 mm width, in rolls of 15 m.

The 40 mm variant of the **wolfseal** connection tape is also available as meterware and is used for the proper sealing of a potential equalization.

## THE APPLICATION AREA

The **wolfseal** connection tape can be used to create tight connections in all possible components. Additionally it serves to repair any potential defects in the joint area.

## THE PROCESSING

Before applying the **wolfseal** connection tape, proper preparation of the substrate is necessary.

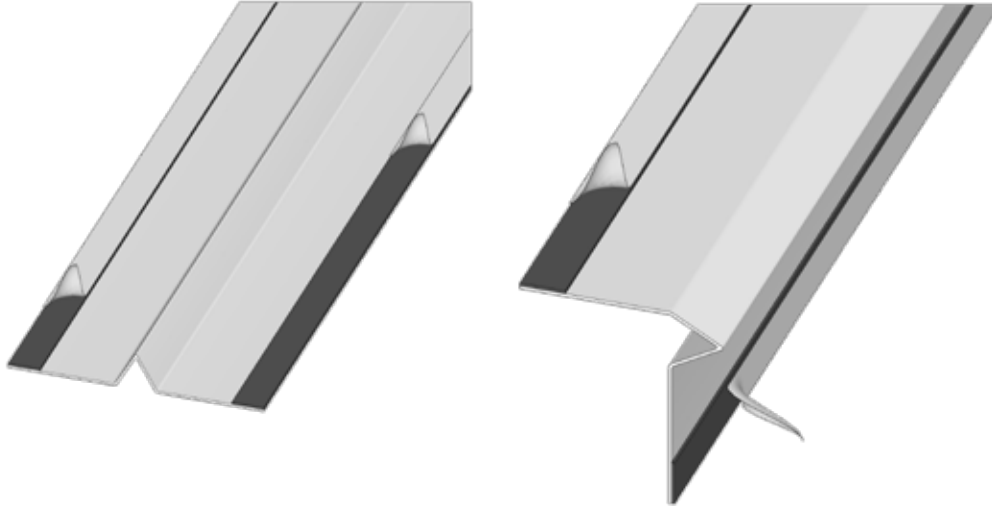
The adhesive side of the connection band is then applied to the component. The protective films must be removed before concreting. It is important to follow the processing guidelines.



## COMPELLING ADVANTAGES

- Easy application
- Versatile use
- A real „emergency solution“ for all problem cases

# WOLFSEAL CLOSURE PROFILE STRAIGHT AND CORNER



## THE PRODUCT

The product is a formwork made of galvanized steel sheet with a **wolfseal** special bonding coating to protect against leaking concrete slurry during the filling of element walls.

Element length: 2,0 m  
Element width: 12 cm  
Joint width: 1 - 3 cm

## THE APPLICATION AREA

The stable fit of the elements seals the vertical joints of element walls.

The **wolfseal** special bonding coating on both sides of the closure profiles adheres securely to the outer surfaces of the element walls, preventing concrete from leaking out of the joints between the element walls. **wolfseal** closure profiles remain on the walls and are overlaid with the subsequent PMBC waterproofing.

## THE PROCESSING

The **wolfseal** closure profiles (VP) are secured to both element walls with four dowels per meter during wall erection. To achieve the required installation height, the elements are overlapped by approximately 5 cm.

After proper installation of the elements, no further measures are necessary. The elements are overlaid with the basement waterproofing in exterior basement waterproofing applications. In white tank constructions, the elements remain visible above the joints and are covered with insulation later. The installation guidelines must be followed.

## COMPELLING ADVANTAGES

- Prevents concrete bleeding
- Dimensionally stable elements
- Easy and safe formwork removal for individual concrete pouring sections
- No formwork removal required, elements remain in the component
- Monolithic bond of concrete components



# WOLFSEAL FRESH CONCRETE BOND-SYSTEM



**Not equivalent!  
BETTER**

The **wolfseal** FBV sealing membrane is used as a watertight, backflow-proof sealing membrane to provide additional security in white tank constructions.

It can be used both under floor slabs and on the outside of wall surfaces, as well as in conjunction with insulation in white tank constructions.



**With the wolfseal FBV sealing membrane, your white tank will also be waterproof.**

# WOLFSEAL FBV SEALING MEMBRANE

## THE PRODUCT

The **wolfseal** FBV sealing membrane consists of an elastomer bitumen membrane with polyester fleece reinforcement, featuring a **wolfseal** special composite coating on the upper side and a flammable PP foil on the lower side.

Upper side: sand-coated **wolfseal** special composite coating  
 Lower side: flammable PP foil  
 Material thickness: 3.50 mm

Roll width: 1.00 m  
 Roll length: 7.50 m

Tested water pressure of 5.0 bar.

Information on test certificates and test reports can be found on our website [www.wolfseal.de](http://www.wolfseal.de) under downloads or upon request.

## THE APPLICATION AREA

The **wolfseal** FBV sealing membrane is used as an additional measure for waterproofing white tanks against both pressurized and non-pressurized water.

Due to the crack-bridging properties of the sealing membrane and its secure bond to the concrete, the **wolfseal** FBV sealing membrane provides significantly more security for high-quality white tanks or later inaccessible WU components.

## THE PROCESSING

The **wolfseal** FBV sealing membrane is installed in a single layer on both horizontal and vertical surfaces. The overlap at the seams must be at least 8 cm according to the lateral overlap marking. The FBV Sealing Membrane can be installed on a clean surface, formwork or other various materials.

It is important to ensure that the sand-coated **wolfseal** special bonding coating is placed towards the fresh concrete side. The seams are continuously welded in all layers using a burner or hot air. Before pouring concrete, any contaminants should be removed as much as possible. Installation always precedes the concrete pouring.

Please adhere to the installation guidelines.



## COMPELLING ADVANTAGES

- Tested water pressure of 5.0 bar
- Waterproof, back-flow-proof connection to concrete
- Easy, fast installation due to overlap marking
- No formation of wrinkles
- No length change with temperature fluctuations
- Thermally welded seam connections
- Resistant to organic wastewater
- Radon inhibiting



# WOLFSEAL FBV SEALING MEMBRANE RADON

## THE PRODUCT

The **wolfseal** FBV sealing membrane radon consists of an elastomer bitumen sheet with a polyester fleece insert, featuring a **wolfseal** special bonding coating on the upper side and a flammable PP film on the underside.

Upper side: sanded **wolfseal** special bonding coating  
Under side: flammable PP film

Material thickness: 4.50 mm  
Roll width: 1.00 m  
Roll length: 7.50 m

Tested water pressure of 5.0 bar.

Information on test certificates and reports can be found on our website [www.wolfseal.de](http://www.wolfseal.de) under downloads or upon request.

## THE APPLICATION AREA

The **wolfseal** FBV sealing membrane Radon is used as an additional measure for waterproofing white tanks against both pressurized and non-pressurized water. Due to the crack-bridging properties of the sealing membrane and its secure bond to concrete, the **wolfseal** FBV sealing membrane offers significantly more security for high-quality white tanks or later inaccessible WU components.

## THE PROCESSING

The **wolfseal** FBV sealing membrane is installed in a single layer on horizontal and vertical surfaces. The butt overlap must be at least 8 cm according to the lateral overlap marking. The FBV sealing membrane can be installed on a cleanliness layer, formwork or other various materials.

It is important to ensure that the gritted **wolfseal** special composite coating is laid towards the fresh concrete side. The joints are continuously welded in all layers using a burner or hot air. Before concreting, contaminants should be removed as much as possible. Installation always occurs before pouring concrete.

The processing guidelines must be followed.



## COMPELLING ADVANTAGES

- Tested water pressure resistance of 5.0 bar
- Watertight, secure bond to concrete
- Easy, quick installation due to overlap markings
- No formation of wrinkles
- No length changes with temperature fluctuations
- Thermally fused seam connections
- Resistant to organic wastewater
- Radon-proof

# WOLFSEAL FBV WALL THICKNESS

---

## THE PRODUCT

The **wolfseal** (FBV) wall thickness consists of a plastic tube with an inner diameter of approximately 22 mm, along with integrated anchors and water barriers. Additionally, the **wolfseal** (FBV) wall thickness is equipped with the proven **wolfseal** special composite coating to ensure a waterproof bond between the anchorage point and concrete.

This product has been tested and certified by the Building Materials Testing Institute Bodensee.

## THE APPLICATION AREA

The **wolfseal** (FBV) wall thickness serves as a spacer in the two-headed formwork system with the **wolfseal** FBV system.

## THE PROCESSING

After laying the **wolfseal** FBV sealing membrane, the **wolfseal** (FBV) wall thickness is processed in the same way as conventional plastic wall thicknesses.

When closing the formwork, the **wolfseal** coating adheres waterproof to the FBV sealing sheet, preventing water circulation at the tension points.

Processing guidelines must be followed.



## COMPELLING ADVANTAGES

- Immediately sealable after formwork removal
- Weather-independent installation and closure
- Stable spacer for precise wall thicknesses
- Waterproof connection to the **wolfseal** FBV sealing sheet
- Waterproof bond to the wall concrete





# WOLFSEAL FBV SEALING PACKAGE

## THE PRODUCT

The **wolfseal** FBV sealing package is used for the watertight connection of penetrations to the **wolfseal** FBV sealing membrane.

The set consists of:

- **wolfseal** 1K rapid
- **wolfseal** FBV sealing tape standard
- **wolfseal** sealing tape cut in
- Accessories: Brushes and cleaning cloths

By combining the individual components, feedthroughs can be connected easily, quickly and safely. The package is available in three sizes:

**wolfseal** FBV sealing package S / M / L

The appropriate package size can be selected depending on the size and number of penetrations. A table for calculating the required number and size of packages is available on request.

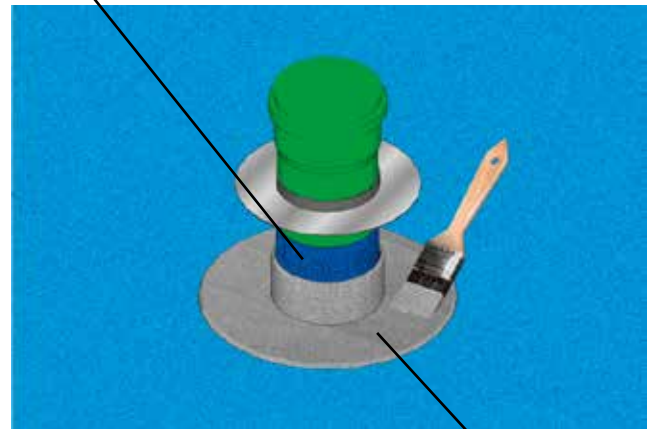
## THE APPLICATION AREA

The use of penetrations in both floor and wall sections inevitably results in penetration points of external structural waterproofing. With the **wolfseal** FBV sealing package, penetrations can be connected watertight to the external **wolfseal** FBV waterproofing membrane and the concrete of the floor slab.

## THE PROCESSING

The upper edge of the drainage corresponds to the upper edge of the cleanliness layer. The cleanliness layer is produced without imperfections up to the penetration. Imperfections around the pipe penetration must be filled. The penetration is cut out of the **wolfseal** FBV membrane. The penetration is then cleaned with a cleaning cloth and taped all around above the lower edge of the floor slab with **wolfseal** FBV sealing tape. The penetration is installed. The **wolfseal** FBV sealing tape is used to create the connection between the penetration and the **wolfseal** FBV membrane. Half of the **wolfseal** FBV sealing tape (5 cm) is glued to the **wolfseal** FBV membrane and half to the penetration. The second **wolfseal** FBV sealing tape is completely coated with **wolfseal** 1K Rapid in a layer thickness of 2 mm. The processing guidelines must be observed.

**wolfseal** sealing tape



**wolfseal** 1K rapid

## COMPELLING ADVANTAGES

- Tight connection of **wolfseal** FBV waterproofing membranes to penetrations
- Simple, fast and safe processing
- Low risk of processing errors
- Virtually all-weather processing

# WOLFCONNECT MICROPILE SEALING RING

**NEW!**

## THE PRODUCT

The wolfconnect micropile sealing ring is the perfect complementary product to the **wolfseal** fresh concrete bonding sealing membrane. It consists of a steel ring filled with **wolfseal** special composite coating and waterproofly connected to the **wolfseal** FBV sealing membrane. By liquefying the composite coating, it can be securely, easily and quickly attached to micropiles.

The packaging unit contains 10 pieces of the sealing rings. The sealing ring is available in three sizes:

### wolfconnect micropile sealing ring (S)

for use with micropiles with a diameter of 2 to 8.5 cm

### wolfconnect micropile sealing ring (M)

for use with micropiles with a diameter of 9 to 14 cm

### wolfconnect micropile sealing ring (L)

for use with micropiles with a diameter of 15 to 20 cm

Tested water pressure of 2.5 bar.

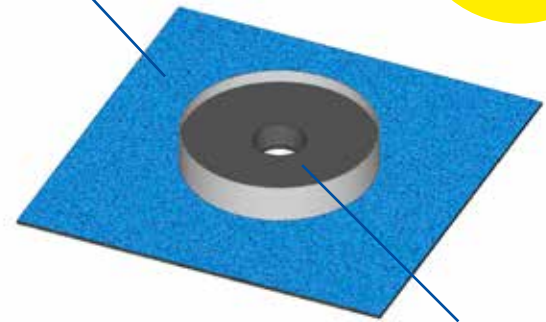
## THE APPLICATION AREA

When using micropiles as part of the foundation system, penetration points of external building waterproofing inevitably arise. With the **wolfconnect** micropile sealing ring, the protruding micropile can be tightly connected to the external **wolfseal** FBV sealing membrane and the concrete of the base plate.

## THE PROCESSING

During the installation of the **wolfseal** FBV sealing membrane beneath the floor slab, the protruding micropiles are left uncovered. The **wolfconnect** micropile sealing ring is then placed over each micropile and the FBV sealing flange is tightly welded to the laid **wolfseal** FBV sealing membrane. The **wolfseal** special bonding coating of the sealing ring is heated using a burner. As the mass cools down, a pressurewaterproof connection to the micropile is established. The fresh concrete bonding property of the special bonding coating ensures a tight connection with the fresh concrete of the subsequent floor slab. Please ensure compliance with the processing guidelines.

wolfseal FBV sealing membrane



wolfseal special composite coating

## COMPELLING ADVANTAGES

- Tested water pressure resistance of 2.5 bar
- Tight connection of **wolfseal** FBV sealing membranes to micropiles
- Easy, fast and secure processing
- Low risk of processing errors
- Almost weather-independent processing
- Tested by an independent testing institute







**thepro**  
DAMMDICHT SYSTEM





# thepro Insulation Seal System

over  
**130.000 m<sup>2</sup>**

thepro elements have been  
installed since 2010

**350+**

single-family houses  
successfully sealed

**200+**

large construction sites  
efficiently managed



# PRODUCT OVERVIEW THEPRO INSULATIONSEAL SYSTEM

## thepro InsulationSealElement (DDE) for pressurized/ non-pressurized water

page 37

130 kPa / 180 kPa / 250 kPa XPS elements for insulating and sealing concreted wall and floor surfaces  
- against pressing and non-pressing water incl. **wolfseal** FBV sealing membrane 3.5 mm.

### Package size

Width: 2.40 meters - Insulation thickness: 80 mm to 200 mm - Height: up to a maximum of 5.0 meters



## thepro wall thickness

page 39

Waterproof wall thickness with external **wolfseal** special bonding coating.

### Package size

Box of 50 pieces (including 2 x stoppers and 1 x closure cap)

**WT 24 | WT 50 | WT 30 | WT 36,5 | WT 40**



## thepro joint sealing tape

For the proper sealing of horizontal and vertical joints.

### Package size

1 roll with a length of 10 linear meters



## thepro joint sealing tape *individual*

For the proper sealing of joints at inside corners.

### Package size

Custom length and width



## thepro connection tape

For the proper sealing of equipotential bonding.

### Package size

1 roll of 15 linear meters - **width 40 mm | 75 mm**

1 linear meter - **width 40 mm**



## thepro bulkhead wall u-profile

page 40

U-profile for flush mounting of the thepro elements on the cleanliness layer.

### Package size

Profiles of 2 meters in length



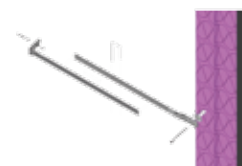
## thepro bulkhead wall assembly rod

page 41

Assembly rod including insulation dowel and screw for fastening the thepro elements to the structure.

### Package size

Box of 20 pieces - Length: 20 - 100 cm



## thepro bulkhead wall spacer

page 42

Spacer for single-sided formwork against the thepro partition wall to maintain the planned wall thickness when filling the cavity for formwork. Rod steel with enlarged outer contact surface - inner side with plastic cap.

Package size

Packing unit: project-specific - available in all wall thicknesses.



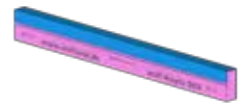
## thepro DDS - straight

page 45

Used for insulation and sealing of the base area of buildings with easy connection to windows and doors.

Package size

Length: 2,40 m - Insulation thickness: 80 - 200 mm - Height: 20, 25, 30, 35, 40, 60 cm



NEW!

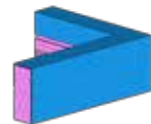
## thepro DDS - internal corner

page 45

Used for insulation and sealing of the base area of buildings. For use at internal corners.

Package size

Outer leg: 62,5 x 62,5 cm - Insulation thickness: 80 - 200 mm - Height: 20, 25, 30, 35, 40, 60 cm



NEW!

## thepro DDS - external corner

page 45

Used for insulation and sealing of the base area of buildings. For use at external corners.

Package size

Outer leg: 62,5 x 62,5 cm - Insulation thickness: 80 - 200 mm - Height: 20, 25, 30, 35, 40, 60 cm



NEW!

## thepro DDS joint sealing tape

page 46

For proper sealing of vertical joints between thepro DDS elements.

Package size

1 roll of 10 linear meters - Width: 10 cm



NEW!

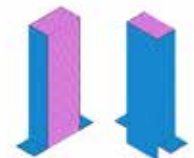
## thepro DDS reveal element

page 46

For the proper connection of floor-level windows and doors in the construction with facing brickwork.

Package size

Width: 20 cm - Insulation thicknesses: 80 - 200 mm - Height: 60 cm



NEW!



## THEPRO INSULATION AND SEALING SYSTEM



**Thermal insulation  
and waterproofing in  
one product!**

The thepro Insulation and Sealing System is an additional measure for the white tank in in-situ concrete.

The system combines the advantages of the **wolf**seal fresh concrete bonding system with the requirements for effective thermal insulation using XPS elements.



**The new generation of waterproofing technology**

# THEPRO INSULATION SEAL ELEMENT (DDE)



## THE PRODUCT

The thepro InsulationSealElement consist of large-format XPS insulation panels laminated on one side with **wolfseal** FBV sealing membrane, which can be installed under floor slabs and on exterior walls. These elements serve as water-resistant thermal insulation as well as, when used with White Tanks, as crack-bridging external waterproofing against both pressurized and non-pressurized water.

For installation under the floor slab, the thepro InsulationSealElement are produced in the format of 2.40 m x 2.75 m with the required compressive strength.

For installation on walls, the thepro InsulationSealElement are produced with a width of 2.40 m and an individual height of up to 5 m.



Available in the following compressive strengths:  
130 kPa/ 180 kPa / 250 kPa  
and in thicknesses ranging from 80 mm and 200 mm

## THE APPLICATION AREA

To seal structures for the case of hydrostatic pressure in conjunction with a White Tank, as well as according to DIN 18533 for the case of moisture from the ground, including a perimeter insulation that ensures no water ingress from behind.

## THE PROCESSING

The thepro InsulationSealElement is installed within the wall formwork. Cutouts and penetrations are easily made on-site. The FBV system ensures that the thepro InsulationSealElement is monolithically and securely bonded to the concrete wall. The thepro DDE can be inserted into the formwork for single-sided formwork against the shoring or placed within the formwork for double-sided formwork.

Please follow the installation guidelines carefully.

### COMPELLING ADVANTAGES BETTER WATERPROOFING

- Full-surface, crack-bridging exterior waterproofing
- Bond between waterproofing and concrete: No backflow in case of damage
- Easy processing of elements with hot air or flame
- Quick processing

### COMPELLING ADVANTAGES BETTER THERMAL INSULATION

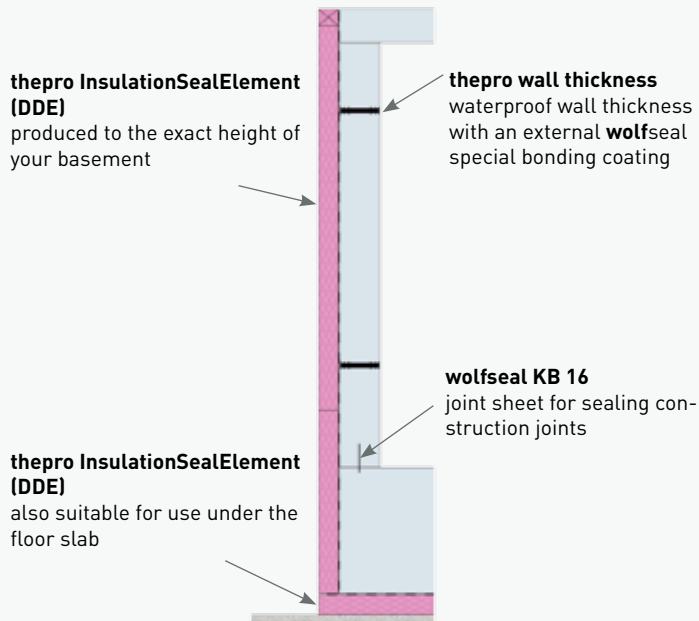
- No thermal bridges at pump sump, floor slab, wall/ floor junction, windows, and light shaft
- Full-surface and backflow-proof bond between waterproofing and thermal insulation
- Quick installation due to large-format elements
- Available in all common insulation thicknesses and compressive strengths

➔ Approved for use against pressurized water in conjunction with a White Tank

## THEPRO INSULATIONSEALELEMENT APPLICATION POSSIBILITIES

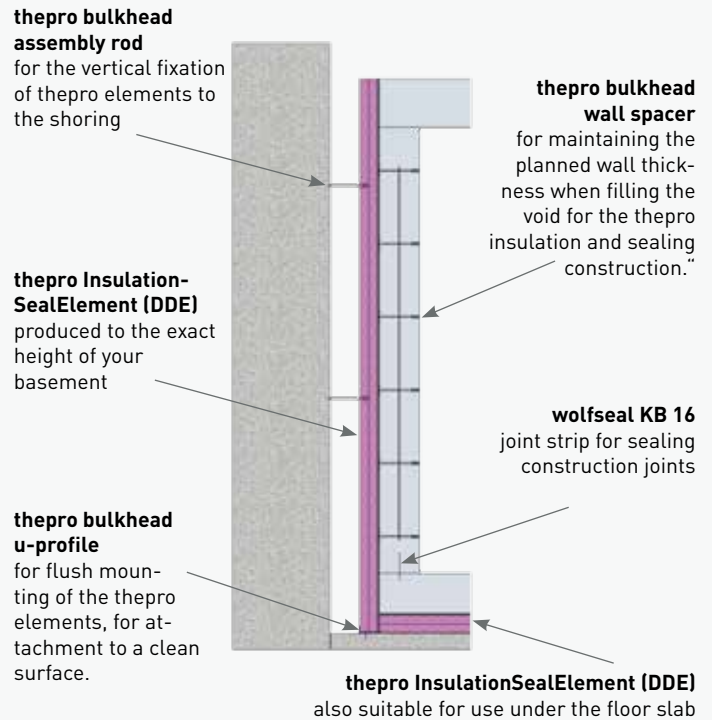
### THEPRO STANDARD

Use in **double-headed formwork**



### THEPRO BULKHEAD

Use in **single-headed formwork**



**THE THEPRO PARTITION WALL:  
YOUR PROBLEM SOLVER FOR INFILL CONSTRUCTION AND LIMITED CONSTRUCTION SPACE**



Discover the  
the pro partition wall  
on YouTube



the pro bulkhead wall  
**Construction site  
workflow**



the pro bulkhead wall  
**Assembly video**





# THEPRO WALL THICKNESS

---

## THE PRODUCT

The thepro wall thickness consists of a plastic tube with an inner diameter of approximately 22 mm, including integrated anchors and water barriers. Additionally the thepro wall thickness is equipped with the proven **wolfseal** special bonding coating for a waterproof connection between the anchorage point and concrete.



## THE APPLICATION AREA

The application area for wall thicknesses is as spacers between inner formwork and thepro elements.

## THE PROCESSING

The processing of thepro wall thicknesses involves them spreading against the thepro elements, unlike conventional plastic spacers. Only the tension rod is passed through the thepro wall element.

The **wolfseal** special bonding coating ensures a watertight connection between the wall thickness and the **wolfseal** FBV sealing membrane.

After the walls are demolded, the wall thicknesses are sealed from the inside with two sealing plugs and a closure cap.

Please follow the processing guidelines.

## COMPELLING ADVANTAGES

- Additional security provided by the **wolfseal** special bonding coating between the wall thickness and concrete, ensuring a strong bond
- Immediately sealable after demolding
- Weather-independent installation and closure
- Secure fit of the wall thickness
- Stable spacer for precise wall thicknesses

# THEPRO BULKHEAD WALL U-PROFILE

## THE PRODUCT

U-profile for the flush installation of the thepro elements as a partition wall on the clean layer.

Length: 2 meters

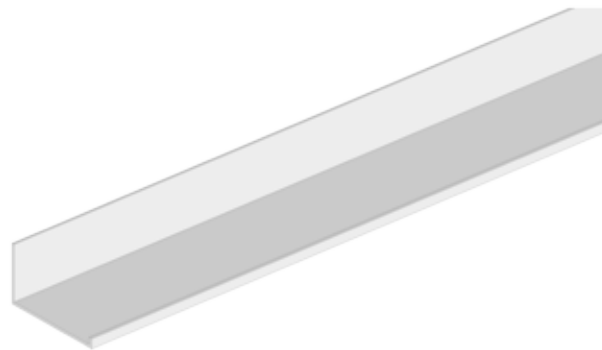
## THE APPLICATION AREA

The u-profile for the partition wall fixes the thepro elements at the lower edge on the clean layer. The u-profile is independent of the insulation thickness. The higher wing on the outside serves as the alignment guide, while the lower wing is for anchoring in the thepro elements.

## THE PROCESSING

The u-profile is fixed on the clean layer. The higher wing serves as a stop during installation, thus determining the alignment of the partition wall to be created.

The processing guidelines must be observed.



## COMPELLING ADVANTAGES

- Easy installation
- Suitable for all insulation thicknesses
- For securing the thepro partition wall elements on the clean layer
- Alignment guidance



# THEPRO BULKHEAD WALL ASSEMBLY ROD

## THE PRODUCT

Variable assembly rod including insulation anchor and screw for fastening to the thepro element.

Length: 20 - 100 cm

## THE APPLICATION AREA

For fastening the thepro elements to the formwork.

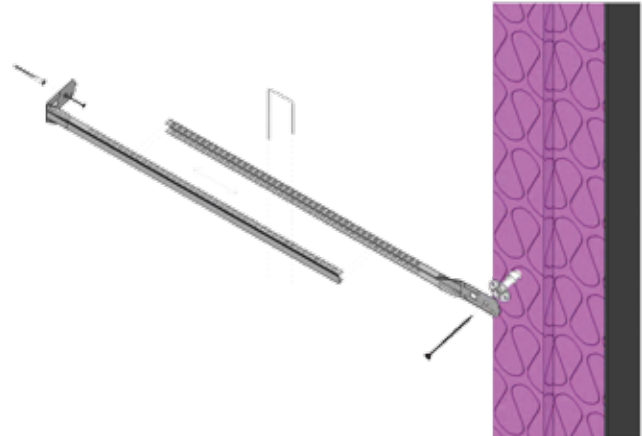
## THE PROCESSING

The assembly rods are used to secure the thepro elements to the formwork.

The assembly rod is attached to the side (or top) of the thepro element using an insulation anchor. At the formwork, the assembly rod is secured with suitable fastening material (not included).

To achieve vertical installation, the length of the assembly rod can be adjusted individually.

The processing guidelines must be observed.



## COMPELLING ADVANTAGES

- Length individually adjustable
- Quick positioning security of the thepro bulkhead wall elements
- Can be used with all types of formwork

# THEPRO BULKHEAD WALL SPACER

## THE PRODUCT

The thepro bulkhead wall spacer for single-sided formwork against the thepro partition wall, ensuring the planned wall thickness is maintained when filling the cavity for formwork. It comprises a steel rod with an externally coated contact surface and an internally placed plastic cap.

Wall thickness: approx. 24 - 30 cm

Installation grid: 45 x 45 cm

other wall thicknesses available upon request

Packaged in sets of 6 with a crossbar for quick assembly.

## THE APPLICATION AREA

The spacer defines the planned wall thickness when using the thepro partition wall.

It distributes the earth pressure generated during backfilling of the partition wall to the single-sided formwork on the inside.



## THE PROCESSING

The spacers are produced according to the project requirements. Several spacers are fixed onto a transverse rod and can be quickly and accurately installed.

The installation grid is 45 x 45 cm. Installation is carried out between the outer and inner reinforcement layers. The spacers must be secured to the reinforcement both inside and outside.

Please follow the installation guidelines carefully.



## COMPELLING ADVANTAGES

- Facilitates filling the voids between the new construction and the formwork
- Distributes the soil pressure onto the single-sided formwork
- Quick installation thanks to the transverse rod





## THEPRO DDS

The building plinth constitutes the lowest visible part of a facade and must be connected to the belowground waterproofing in terms of construction. The challenging accessibility and the resulting timeconsuming and complicated work often lead to execution problems.

**Therefore, we have developed a solution that quickly and reliably solves all problems associated with plinth sealing.**

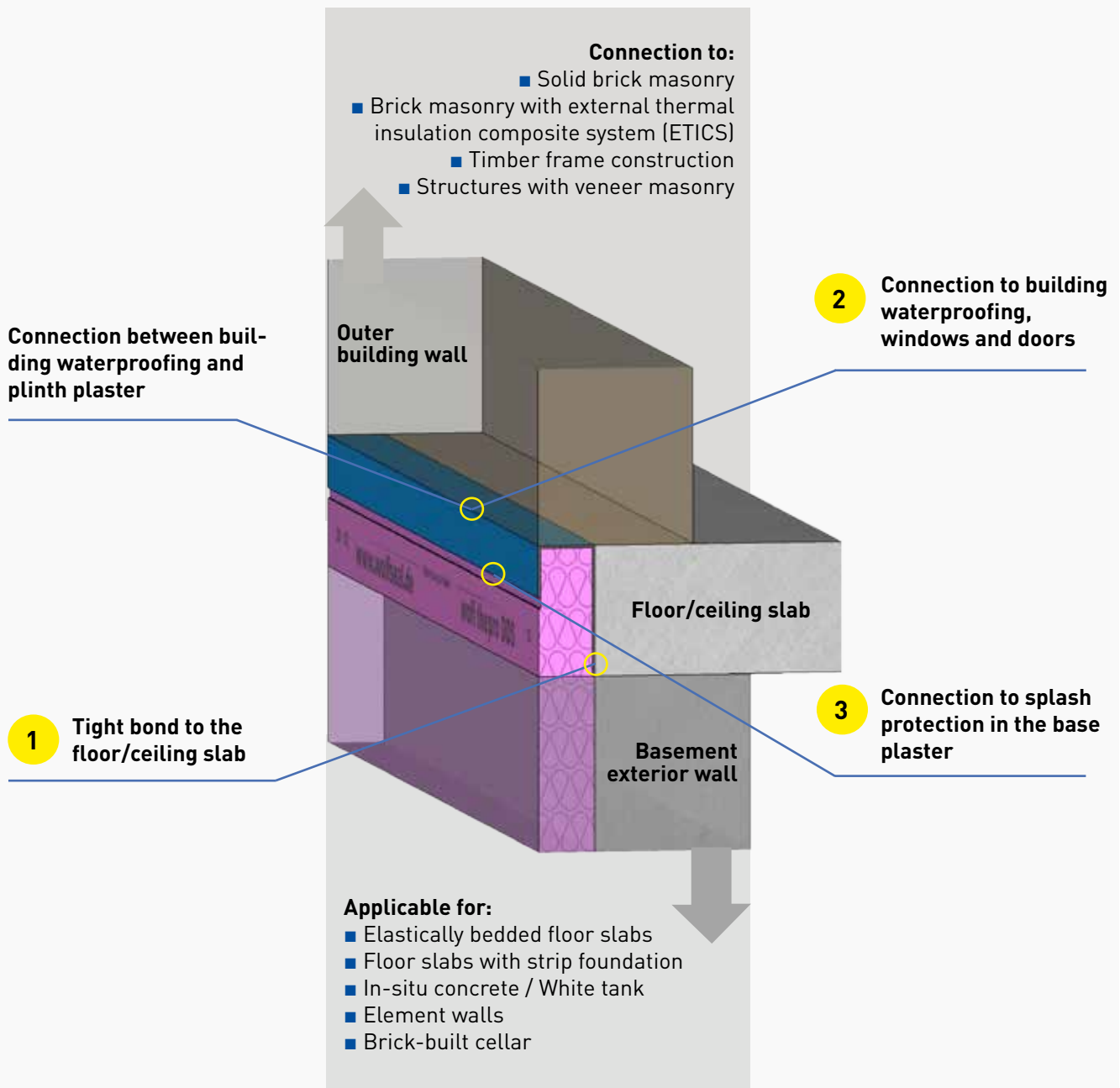
**This is  
how plinth  
waterproofing is  
done**



**The perfect solution for plinth waterproofing.**

# THEPRO DDS - THIS IS HOW PLINTH WATERPROOFING IS DONE

## The convincing functionality



Reliable base sealing with waterproof connection to all trades



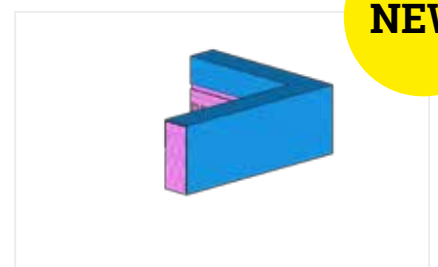
# THEPRO DDS



**STRAIGHT**



**EXTERNAL CORNER**



**INTERNAL CORNER**

**NEW!**

## THE PRODUCT

The thepro DDS is a combination of the **wolfseal** fresh concrete bonding sealing membrane and XPS thermal insulation.

It is suitable for both non-celled floor slabs and for edge formwork of ceilings. The thepro DDS is available in all common insulation thicknesses.

The **wolfseal** fresh concrete bonding sealing membrane creates a watertight connection between insulation and end face of the floor/ceiling slab (1) as well as to the splash water protection in the base area (3) and connects both surfaces watertight (2). Doors or floor-to-ceiling windows can be easily and watertightly connected on top of the thepro DDS.

## THE APPLICATION AREA

The thepro DDS provides waterproofing and thermal insulation for the base area of both cellar and non-cellar structures.

## THE PROCESSING

Due to the remarkable dimensional stability of the elements, the thepro DDS can be used as formwork for floor and ceiling slabs:

- For non-cellar structures with elastically bedded floor slabs, the thepro DDS can be used as formwork.
- For cellar structures, the thepro DDS is attached as ceiling edge formwork at the top of the wall.

Subsequent waterproofing measures, such as the connection to doors or floor-to-ceiling windows or the splash water protection on the exterior of the base, can be carried out using tested mineral or bituminous coatings or liquid plastics.

The connecting surfaces to subsequent waterproofing must always be even and easily accessible.

The processing guidelines must be observed.

## COMPELLING ADVANTAGES

- Easy processing of waterproofing and thermal insulation in the base area
- Secure and easily accessible connection options for all subsequent waterproofing measures
- Tight bond with elastic sealing slurries and bituminous thick coatings
- Optimal connection to floor-to-ceiling windows and doors
- Base waterproofing according to the requirements of DIN 18533-1

# ACCESSORIES

## thepro DDS joint sealing tape

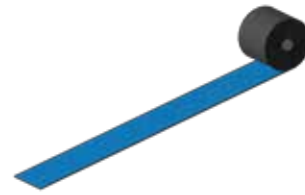
### THE PRODUCT

The underside of the thepro DDS joint sealing tape ensures a tight bond with the sanded surface of the **wolfseal** FBV sealing membrane. The sanded **wolfseal** special bonding coating forms a waterproof connection with all mineral renders and spackle compounds.

Roll width: 10 cm | Roll length: 15 linear meters

### THE PROCESSING

The thepro DDS joint sealing tape is fully rolled onto the sanded surface of the thepro DDS elements. The surface of the thepro DDS elements must be dry and free from impurities. At temperatures below 5 degrees Celsius, the **wolfseal** FBV sheet of the thepro DDS element must be heated. Please adhere to the processing guidelines.



### THE APPLICATION AREA

For waterproof connection of joints between the thepro DDS elements.

### COMPELLING ADVANTAGES

- Easy processing
- Fresh concrete bonding technology remains intact even in the joint area
- Tight connection with the sanded surface of the **wolfseal** FBV sealing membrane without preheating (up to +5°C)

## thepro DDS reveal element

### THE PRODUCT

Due to the high compressive strength of the thepro DDS elements, windows and doors can be directly attached to them.

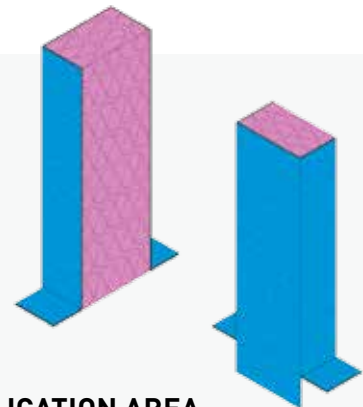
Since the sealing and thermal insulation are also provided by the thepro DDS elements, the plinth area can be properly sealed using PMBC or MDS trowel compounds, or by self-adhesive sealing membranes without further measures.

Width: 20 cm | Height: 60 cm | Insulation thickness: 80 - 200 cm

### THE PROCESSING

The thepro DDS reveal elements are installed on the left and right sides of openings after laying the masonry on the thepro DDS elements. The reveal elements are adhered to the thepro DDS base elements using epoxy resin mortar. The protruding sealing membrane is tightly welded to the sealing membrane of the base elements at the front and sides.

Please follow the installation guidelines carefully.



### THE APPLICATION AREA

Handles the sealing and thermal insulation of floor-to-ceiling windows and doors in the plinth area of structures with facing brickwork.

### COMPELLING ADVANTAGES

- Secure attachment of floor-to-ceiling windows and doors
- Secure and easily accessible connection points for all subsequent sealing measures
- Strong bond with elastic sealing slurries, bituminous thick coatings, and self-adhesive sealing membranes

# MORE PRODUCTS MORE INFORMATION MORE SERVICE



Download  
brochures



Download  
assembly instructions



Tender texts



Customer service /  
contact person



YouTube-Channel



Discover the  
possibilities for  
your dense  
structure.



# SERVICES

## YOUR STRONG PARTNER FOR BUILDING WATERPROOFING

As a competence center in the field of building waterproofing, we support you in the planning and implementation of your new construction projects.

Since the success of a waterproofing measure largely depends on the quality of our product processing, we also offer a comprehensive range of services.

Our service offerings are as diverse as the waterproofing industry and can be flexibly tailored to your needs.

**Your  
waterproofing  
expert**



# SAFE PRODUCTS - INDIVIDUAL SERVICE OFFERING

---

## QUOTATION-/CONSULTATION PHASE

User-driven needs analysis



## PLANNING PHASE

WU planning, FBV planning  
or  
combined planning (Planning liability)



## EXECUTION PHASE

### Quality assurance (QA) / support

- ✓ QA execution monitoring
- ✓ QA construction supervision
- ✓ Consultation & Assessment
- ✓ Documentation & Logging

### Delivery

- ✓ **wolf**seal waterproofing products
- ✓ thepro InsulationSeal System
- ✓ (Product Liability & Protection Plan)



**Roland Wolf GmbH**

Großes Wert 21  
89155 Erbach  
Germany

Phone +49 (0) 7305.96 22 - 0  
Fax +49 (0) 7305.96 22 - 22

E-mail: [info@wolfseal.de](mailto:info@wolfseal.de)  
[www.wolfseal.de](http://www.wolfseal.de)

